

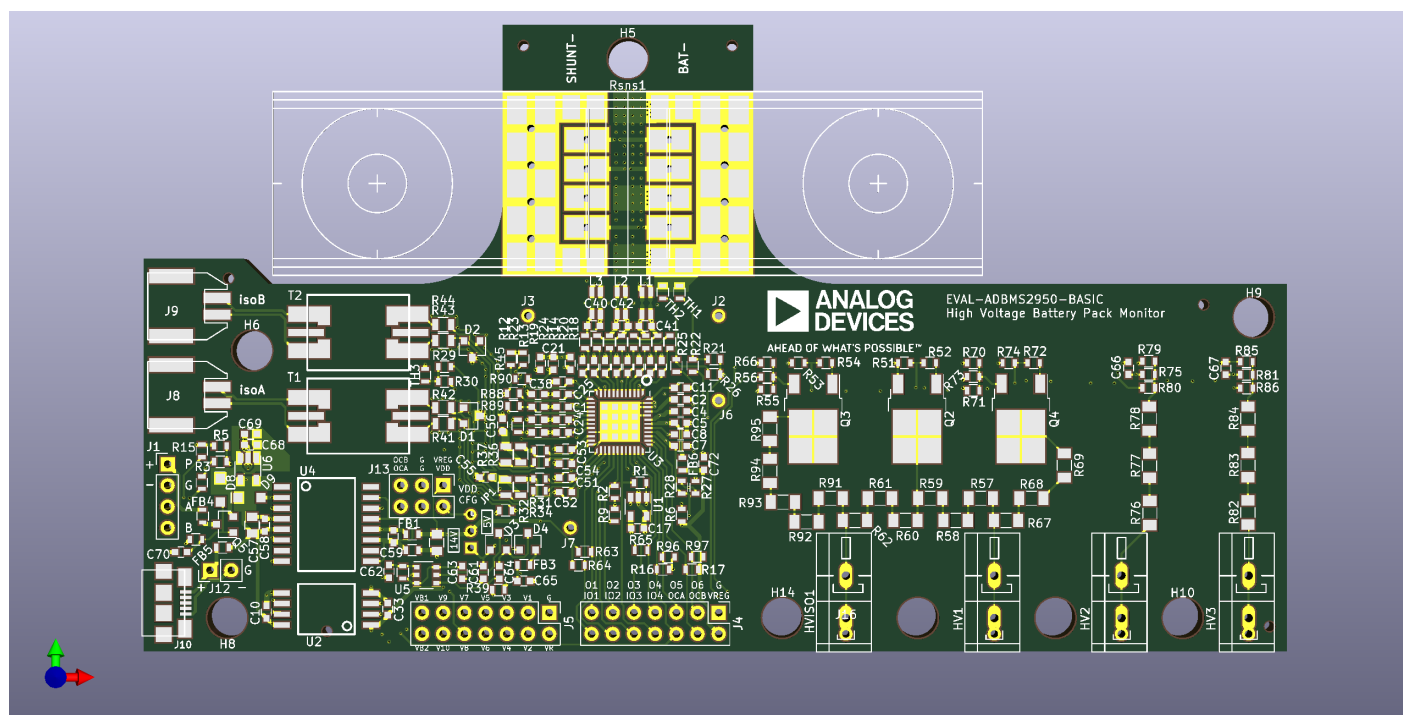


Technical notes on using Analog Devices products and development tools

For further information contact your local Field Applications Engineer.

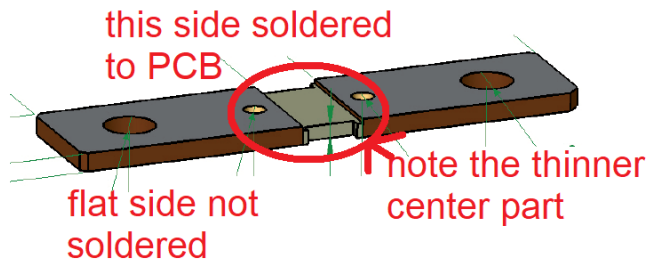
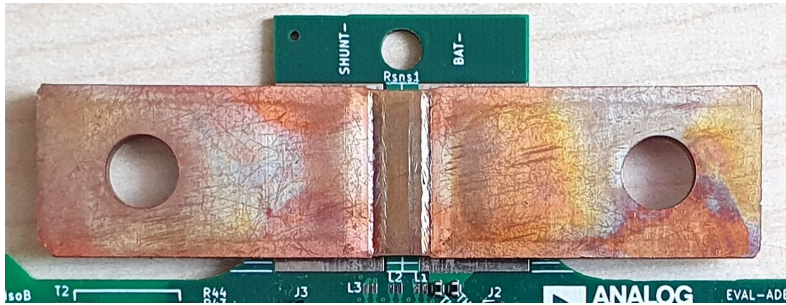
EVAL-ADBMS2950-BASIC-REV02-ASSEMBLY-DRAWING

Contributed by
Revision - September 27, 2021

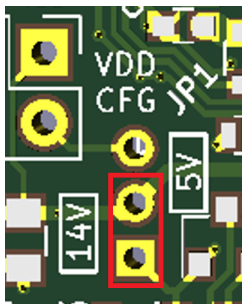


- Base Material: FR-4
- Layers: 4
- Dimension: 137 mm* 75 mm
- PCB Thickness: 1.6
- PCB Color: Black
- Silkscreen: White
- Assembly on TOP only
- Shunt resistor Rsns1 also soldered on TOP as shown below

Copyright 2021, Analog Devices, Inc. All rights reserved. Analog Devices assumes no responsibility for customer product design or the use or application of customers' products or for any infringements of patents or rights of others which may result from Analog Devices assistance. All trademarks and logos are property of their respective holders. Information furnished by Analog Devices applications and development tools engineers is believed to be accurate and reliable, however no responsibility is assumed by Analog Devices regarding technical accuracy and topicality of the content provided in Analog Devices Engineer-to-Engineer Notes.



- add shunt to JP1 to position '14V' as shown below



- Install 6 standoffs at 6 locations as shown below

| | | | | | |
|--------------------------|---|--|--|----------|------|
| H5,H6,H8,H9,H10,H11 4 | 6 | PCB Spacer (loose part, not soldered) | STANDOFF,NYLON,SNAP- ON,0.25" (6.4mm) | KEYSTONE | 8831 |
|--------------------------|---|--|--|----------|------|

